

INSPECTOR[®] Truck MW25 *Easybox*

98325300

Inspector[®] ZRK 70
Ideal for the complete inspection of inlets and walls of pipes

98327900

MW25 + ZRK

- manual adjustable lift
- small and large wheels
- wheel spacers
- powerful 104W motor

98321810

Reel

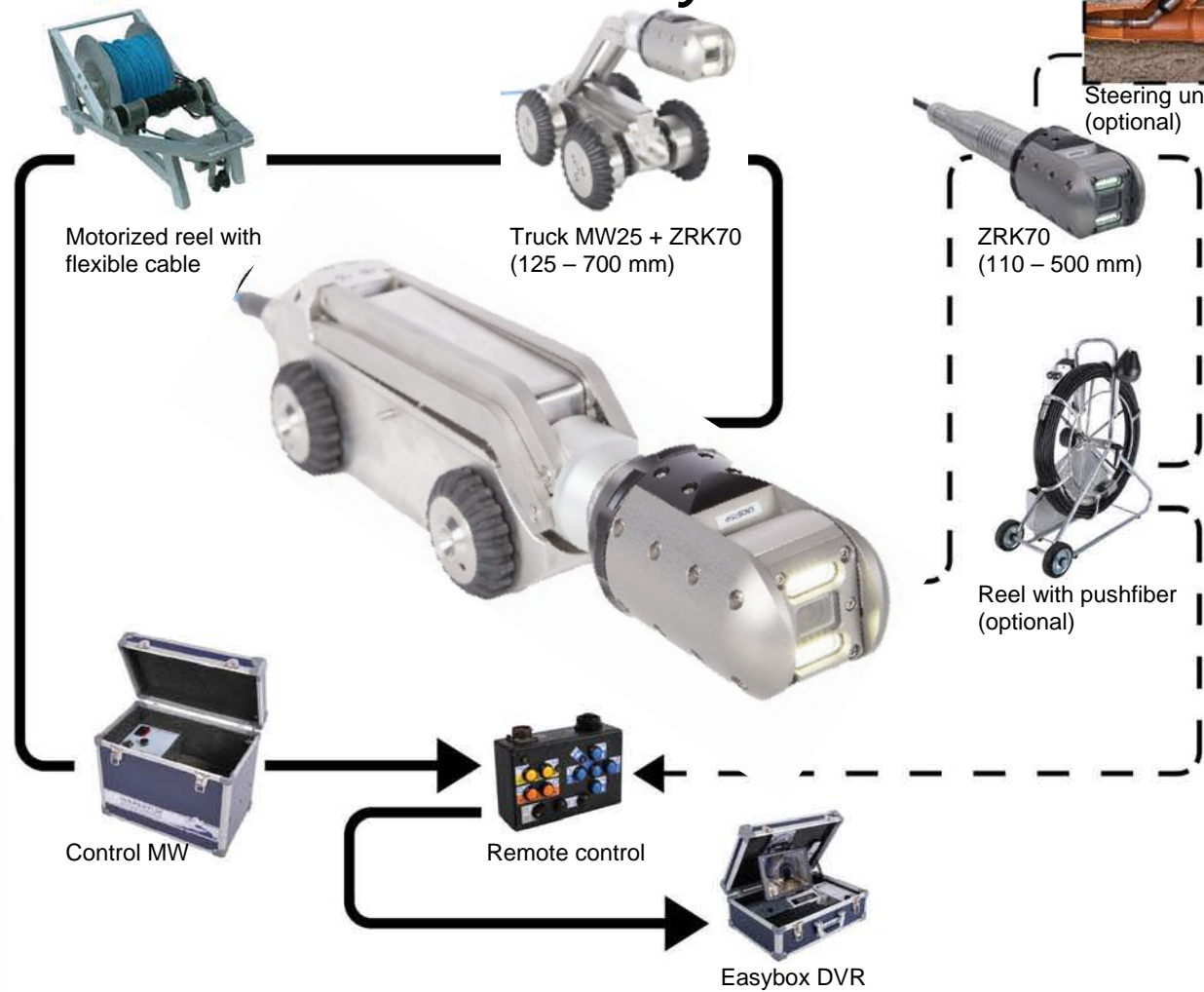
- motorized
- flex cable
- lengths to 200 m
- automatic winding
- transportable

98325930

Easybox DVR

- report
- 10.4" LCD display
- DVR recorder USB
- USB interface for laptop

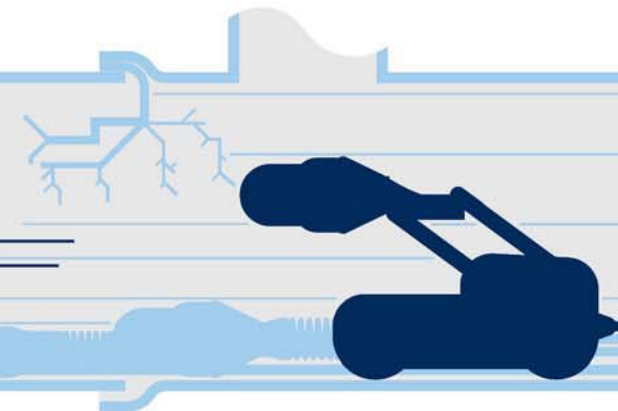
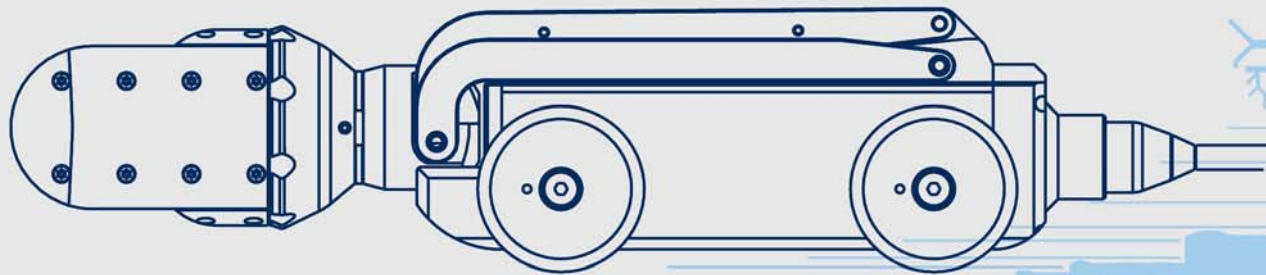
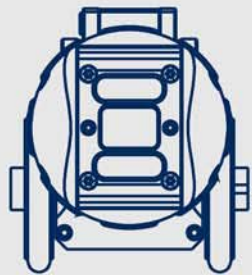
FUNCTIONALITY >
< INSPECTION SYSTEM



The *Truck MW25* transports the ZRK70 camera head through a pipe. The camera head is easy to mount on the truck. The lift function, additional wheelsets and spacers make the MW25 adaptable to a variety of pipe diameters. Therefore the working area ranges from 125 mm to a minimum of 700 mm.

Operation and functionality
The ZRK70 can rotate endlessly and swerve 230 degrees. The light output is very high due to the latest LED technology. Focussing the image is done with help of the remote control. The MW25 pulls the cable into the pipe, while the motorized reel takes care of automatically rewinding the cable. This motorized reel can be transported easily, using its wheels on the bottom. A box will be supplied for the electronic control unit. This box also serves storage for the Truck and camerahead. Image display and recording on an usb memory stick can be done using the Easybox. For difficult situations, pipes with lots of bends, the ZRK70 camera head can be unscrewed from the Truck and mounted on a push fiber. This makes it possible to inspect sewer pipes to houses. With our optional steering unit you will be able to steer the camerahead into a side-branch.

Check the demo movie:
<http://www.camtronics.eu/inspection-sewer-camera/transport-inspector-truck-mw25>



INSPECTOR[®] Truck MW25 *Easybox*

98322060



Reel
 ·lengths to 100 m
 ·manual winding
 ·portable

98325529



Guide 100
 for pipes
 from 125 mm

98325627



Guide 170
 for pipes
 from 200 mm

98326346



Guide 170 Sledge
 for pipes
 from 200 mm

SPECIFICATIONS >
 < ACCESSORIES

Inspector[®] Truck MW25

material	stainless steel
length	289 mm (excl connectors)
width	56 mm
height	88 mm
drive	4 wheels
motor output power	104 Watt
small wheels	56 mm
wheel spacer	Ø75x30 mm
big wheels	116 mm
connector	19p military quality
weight	6,5-12,5 kg
min lift height	52 mm
max lift height	228 mm

Reel Big MW Motorized

dimensions	110x47x46 cm
material	aluminium/stainless steel
weight	35 kg (50 m cable)
brake	automatic
cable	PUR very durable, Kevlar strengtened
diameter cable	7,5 mm
cable length	50 m (more cable optional)
cable length max.	200 m
meter counter	electric on screen
cable winding	automatic
transport	wheels (for vertical transport)
motor	24V DC

Reel MW

dimensions	37x27x46 cm
material	metal coated
weight	10 kg (50 m cable)
brake	adjustable
cable	PUR very durable strengthened with Kevlar
diameter cable	7,5 mm
cable length	50 m (optional more cable possible)
cable length max.	100 m
meter counter	electric on screen

MW Control/ Transport Box

dimensions	49x35x41 cm
transport	integrated trolley
power in (mains)	230V AC ground connn.
temperature (usage)	0° - 45° C
temperature (storage)	0° - 50° C
weight	13 kg (without MW25 and ZRK70)

Inspector[®] development philosophy
Inspector[®] systems are developed to reflect the end user's requirements. During development, continuous improvement of ease of use and functionality is aimed at. In this, productivity of use is key. Durability is essential and is also tested in our test centre. The necessary wear components are easily replaceable by you or by our service centre.

Service
 A camera system is used in severe circumstances. Service and maintenance is thus essential. Our own service centre in Son (near Eindhoven, the Netherlands) can assist you in this. Repair time is thus minimal and you are informed in advance about the costs. If desired, loan/ hire systems are available.

Camtronics BV
 Ekkersrijt 3209
 5692 CG - Son
 The Netherlands

Tel: +31(0)499-494590
 Fax: +31(0)499-494591
 e-mail: info@camtronics.nl



Inspector[®] systems are a Camtronics BV product. Customer-specific modifications are therefore possible!



www.camtronics.nl